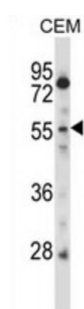
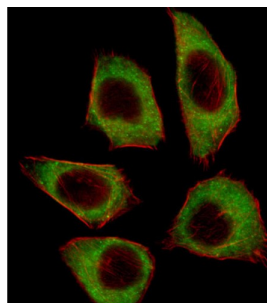


Abbexa Ltd, Innovation Centre, Cambridge Science Park, Cambridge, CB4 0EY, UK
Telephone: +44 (0) 1223 755950 - Fax: +44 (0) 1223 755951 - E-Mail: info@abbexa.com

Cysteine/serine-Rich Nuclear Protein 2 (CSRNP2) Antibody

Catalogue No.: abx027412



CSRNP2 binds to the consensus sequence 5'-AGAGTG-3' and has transcriptional activator activity (By similarity). May play a role in apoptosis.

Target: CSRNP2

Reactivity: Human

Host: Rabbit

Clonality: Polyclonal

Tested Applications: WB, IF/ICC

Recommended dilutions: Optimal dilutions/concentrations should be determined by the end user.

Immunogen: Human CSRNP2.

Purification: Peptide Affinity Purified Rabbit Polyclonal Antibody.

Isotype: IgG

Conjugation: Unconjugated

Abbexa Ltd, Innovation Centre, Cambridge Science Park, Cambridge, CB4 0EY, UK
Telephone: +44 (0) 1223 755950 - Fax: +44 (0) 1223 755951 - E-Mail: info@abbexa.com

Specificity:	This CSRNP2 antibody is generated from rabbits immunized with a KLH conjugated synthetic peptide between 509-538 amino acids from the C-terminal region of human CSRNP2.
Storage:	Aliquot and store at -20 °C. Avoid repeated freeze/thaw cycles.
Swiss Prot:	<u>Q9H175</u>
Gene Symbol:	CSRNP2
Buffer:	PBS with 0.09% (W/V) sodium azide. This antibody is purified through a protein A column, followed by peptide affinity purification.
Note:	This product is for research use only.