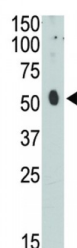
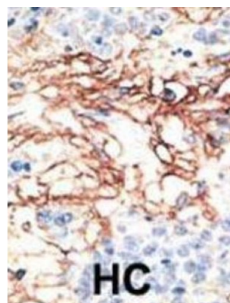


Abbexa Ltd, Innovation Centre, Cambridge Science Park, Cambridge, CB4 0EY, UK  
Telephone: +44 (0) 1223 755950 - Fax: +44 (0) 1223 755951 - E-Mail: [info@abbexa.com](mailto:info@abbexa.com)

## CEM15 Antibody

Catalogue No.: abx027438



CEM15 is a member of the cytidine deaminase family. It is the product of one of seven related genes or pseudogenes found in a cluster, thought to result from gene duplication, on chromosome 22. Members of the cluster encode proteins that are structurally and functionally related to the C to U RNA-editing cytidine deaminase APOBEC1. It is thought that the proteins may be RNA editing enzymes and have roles in growth or cell cycle control. CEM15 has been found to be a specific inhibitor of human immunodeficiency virus-1 (HIV-1) infectivity.

**Target:** CEM15

**Reactivity:** Human

**Host:** Rabbit

**Clonality:** Polyclonal

**Tested Applications:** IHC

**Recommended dilutions:** Optimal dilutions/concentrations should be determined by the end user.

**Immunogen:** Human CEM15.

**Purification:** Purified Rabbit Polyclonal Antibody.

**Isotype:** IgG

Abbexa Ltd, Innovation Centre, Cambridge Science Park, Cambridge, CB4 0EY, UK  
Telephone: +44 (0) 1223 755950 - Fax: +44 (0) 1223 755951 - E-Mail: [info@abbexa.com](mailto:info@abbexa.com)

**Conjugation:** Unconjugated

**Specificity:** This CEM15 antibody is generated from rabbits immunized with a KLH conjugated synthetic peptide between 5-35 amino acids from the N-terminal region of human CEM15.

**Storage:** Aliquot and store at -20 °C. Avoid repeated freeze/thaw cycles.

**Swiss Prot:** [Q9HC16](#)

**Buffer:** PBS with 0.09% (W/V) sodium azide. This antibody is purified through a protein G column, eluted with high and low pH buffers and neutralized immediately, followed by dialysis against PBS.

**Note:** This product is for research use only.