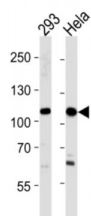


Abbexa Ltd, Innovation Centre, Cambridge Science Park, Cambridge, CB4 0EY, UK
Telephone: +44 (0) 1223 755950 - Fax: +44 (0) 1223 755951 - E-Mail: info@abbexa.com

Sal-Like Protein 4 (SALL4) Antibody

Catalogue No.: abx028391



Sall4 is a probable transcription factor. Defects in Sall4 are the cause of Okihiro syndrome; also known as Duane radial ray syndrome (DRRS). It is a disorder characterized by the association of forearm malformations with Duane retraction syndrome. Sall4 is also involved in forelimb and heart development in mice.

Target: SALL4

Reactivity: Human

Host: Rabbit

Clonality: Polyclonal

Tested Applications: WB

Recommended dilutions: Optimal dilutions/concentrations should be determined by the end user.

Immunogen: Human SALL4.

Purification: Purified Rabbit Polyclonal Antibody.

Isotype: IgG

Conjugation: Unconjugated

Specificity: This SALL4 antibody is generated from rabbits immunized with a KLH conjugated synthetic peptide between 1009-1039 amino acids from the C-terminal region of human SALL4.

Storage: Aliquot and store at -20 °C. Avoid repeated freeze/thaw cycles.

Swiss Prot: [Q9UJQ4](#)

NCBI Accession: NP_065169.1

Abbexa Ltd, Innovation Centre, Cambridge Science Park, Cambridge, CB4 0EY, UK
Telephone: +44 (0) 1223 755950 - Fax: +44 (0) 1223 755951 - E-Mail: info@abbexa.com

Buffer: PBS with 0.09% (W/V) sodium azide. This antibody is purified through a protein A column, eluted with high and low pH buffers and neutralized immediately, followed by dialysis against PBS.

Note: This product is for research use only.