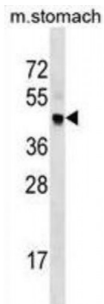


## Cyclin Dependent Kinase 20 (Cdk20) Antibody

Catalogue No.: abx028578



Cdk20 is involved in cell growth. Activates CDK2, a kinase involved in the control of the cell cycle, by phosphorylating residue 'Thr-160' (By similarity). Required for high-level Shh responses in the developing neural tube. Together with BROM1, controls the structure of the primary cilium by coordinating assembly of the ciliary membrane and axoneme, allowing GLI2 to be properly activated in response to SHH signaling.

**Target:** Cdk20

**Reactivity:** Mouse

**Host:** Rabbit

**Clonality:** Polyclonal

**Tested Applications:** WB

**Recommended dilutions:** Optimal dilutions/concentrations should be determined by the end user.

**Immunogen:** Mouse Cdk20.

**Purification:** Peptide Affinity Purified Rabbit Polyclonal Antibody.

**Isotype:** IgG

**Conjugation:** Unconjugated

**Specificity:** This Mouse Cdk20 antibody is generated from rabbits immunized with a KLH conjugated synthetic peptide between 185-212 amino acids from the Central region of mouse Cdk20.

**Storage:** Aliquot and store at -20 °C. Avoid repeated freeze/thaw cycles.

**Swiss Prot:** [Q9JHU3](#)

Abbexa Ltd, Innovation Centre, Cambridge Science Park, Cambridge, CB4 0EY, UK  
Telephone: +44 (0) 1223 755950 - Fax: +44 (0) 1223 755951 - E-Mail: [info@abbexa.com](mailto:info@abbexa.com)

**Buffer:** PBS with 0.09% (W/V) sodium azide. This antibody is purified through a protein A column, followed by peptide affinity purification.

**Note:** This product is for research use only.