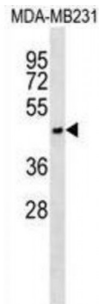


## Asialoglycoprotein Receptor 1 (ASGR1) Antibody

Catalogue No.: abx028618



Partially deglycosylated plasma glycoproteins and immunoglobulin IgA2 allotypes are efficiently and specifically removed from circulation by a receptor-mediated process. The asialoglycoprotein receptor binds to desialylated (galactosyl-terminal) glycoproteins. It transports these glycoproteins via a series of membrane vesicles and tubules to an acidic-sorting organelle where the receptor and ligand dissociate. Then the receptor is recycled back to the cell surface and the ligand is transported to the lysosomes for degradation. Alternatively spliced transcript variants encoding distinct isoforms have been identified.

**Target:** ASGR1

**Reactivity:** Human

**Host:** Rabbit

**Clonality:** Polyclonal

**Tested Applications:** WB

**Recommended dilutions:** Optimal dilutions/concentrations should be determined by the end user.

**Immunogen:** Human ASGR1.

**Purification:** Peptide Affinity Purified Rabbit Polyclonal Antibody.

**Isotype:** IgG

**Conjugation:** Unconjugated

**Specificity:** This ASGR1 antibody is generated from rabbits immunized with a KLH conjugated synthetic peptide between 1-30 amino acids from the N-terminal region of human ASGR1.

**Storage:** Aliquot and store at -20 °C. Avoid repeated freeze/thaw cycles.

**Swiss Prot:** [P07306](#)

Abbexa Ltd, Innovation Centre, Cambridge Science Park, Cambridge, CB4 0EY, UK  
Telephone: +44 (0) 1223 755950 - Fax: +44 (0) 1223 755951 - E-Mail: [info@abbexa.com](mailto:info@abbexa.com)

**Buffer:** PBS with 0.09% (W/V) sodium azide. This antibody is purified through a protein A column, followed by peptide affinity purification.

**Note:** This product is for research use only.