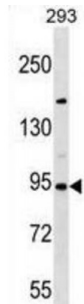


Semaphorin 3D (SEMA3D) Antibody

Catalogue No.: abx028823



Induces the collapse and paralysis of neuronal growth cones. Could potentially act as repulsive cues toward specific neuronal populations. Binds to neuropilin (By similarity).

Target: SEMA3D**Reactivity:** Human**Host:** Rabbit**Clonality:** Polyclonal**Tested Applications:** WB**Recommended dilutions:** Optimal dilutions/concentrations should be determined by the end user.**Immunogen:** Human SEMA3D.**Purification:** Peptide Affinity Purified Rabbit Polyclonal Antibody.**Isotype:** IgG**Conjugation:** Unconjugated**Specificity:** This SEMA3D antibody is generated from rabbits immunized with a KLH conjugated synthetic peptide between 611-640 amino acids from the C-terminal region of human SEMA3D.**Storage:** Aliquot and store at -20 °C. Avoid repeated freeze/thaw cycles.**Swiss Prot:** [O95025](#)**Gene Symbol:** SEMA3D

Abbexa Ltd, Innovation Centre, Cambridge Science Park, Cambridge, CB4 0EY, UK
Telephone: +44 (0) 1223 755950 - Fax: +44 (0) 1223 755951 - E-Mail: info@abbexa.com

Buffer: PBS with 0.09% (W/V) sodium azide. This antibody is purified through a protein A column, followed by peptide affinity purification.

Note: This product is for research use only.