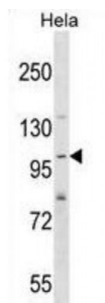


Abbexa Ltd, Innovation Centre, Cambridge Science Park, Cambridge, CB4 0EY, UK
Telephone: +44 (0) 1223 755950 - Fax: +44 (0) 1223 755951 - E-Mail: info@abbexa.com

SH3 And PX Domains 2A (SH3PXD2A) Antibody

Catalogue No.: abx028905



SH3PXD2A is required for podosome formation, degradation of the extracellular matrix, and for the invasiveness of some cancer cells. Binds phosphatidylinositol 3-phosphate (PtdIns (3) P) and phosphatidylinositol 3, 4-bisphosphate (PtdIns (3, 4) P2). In association with ADAM12, mediates the neurotoxic effect of beta-amyloid peptide.

Target: SH3PXD2A

Reactivity: Human

Host: Rabbit

Clonality: Polyclonal

Tested Applications: WB

Recommended dilutions: Optimal dilutions/concentrations should be determined by the end user.

Immunogen: Human SH3PXD2A.

Purification: Peptide Affinity Purified Rabbit Polyclonal Antibody.

Isotype: IgG

Conjugation: Unconjugated

Specificity: This SH3PXD2A antibody is generated from rabbits immunized with a KLH conjugated synthetic peptide between 222-250 amino acids from the N-terminal region of human SH3PXD2A.

Storage: Aliquot and store at -20 °C. Avoid repeated freeze/thaw cycles.

Swiss Prot: [Q5TCZ1](#)

Buffer: PBS with 0.09% (W/V) sodium azide. This antibody is purified through a protein A column, followed by peptide affinity purification.

Note: This product is for research use only.