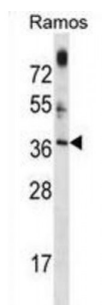


Abbexa Ltd, Innovation Centre, Cambridge Science Park, Cambridge, CB4 0EY, UK
Telephone: +44 (0) 1223 755950 - Fax: +44 (0) 1223 755951 - E-Mail: info@abbexa.com

Mitochondrial Ribosome Associated GTPase 1 (MTG1) Antibody

Catalogue No.: abx028983



Mitochondrial GTPase.MTG1 may be involved in assembly of the large ribosomal subunit (By similarity).

Target: MTG1

Reactivity: Human

Host: Rabbit

Clonality: Polyclonal

Tested Applications: WB

Recommended dilutions: Optimal dilutions/concentrations should be determined by the end user.

Immunogen: Human MTG1.

Purification: Peptide Affinity Purified Rabbit Polyclonal Antibody.

Isotype: IgG

Conjugation: Unconjugated

Specificity: This MTG1 antibody is generated from rabbits immunized with a KLH conjugated synthetic peptide between 116-143 amino acids from the Central region of human MTG1.

Storage: Aliquot and store at -20 °C. Avoid repeated freeze/thaw cycles.

Swiss Prot: [Q9BT17](#)

Gene Symbol: MTG1

Buffer: PBS with 0.09% (W/V) sodium azide. This antibody is purified through a protein A column, followed by peptide affinity purification.

Note: This product is for research use only.