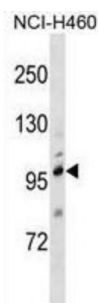


Abbexa Ltd, Innovation Centre, Cambridge Science Park, Cambridge, CB4 0EY, UK
Telephone: +44 (0) 1223 755950 - Fax: +44 (0) 1223 755951 - E-Mail: info@abbexa.com

Transient Receptor Potential Cation Channel Subfamily C Member 1 (TRPC1) Antibody

Catalogue No.: abx029117



TRPC1 belongs to the transient receptor potential (TRP) superfamily of cation channels. TRP cation channels are involved in diverse physiologic processes, including receptor and store-operated Ca (2+) entry, mineral absorption, and cell death. They also function as sensors for pain, heat, cold, sound, stretch, and osmotic changes (Zhang et al., 2009 [PubMed 19193631]).

Target: TRPC1

Reactivity: Human

Host: Rabbit

Clonality: Polyclonal

Tested Applications: WB

Recommended dilutions: Optimal dilutions/concentrations should be determined by the end user.

Immunogen: Human TRPC1.

Purification: Peptide Affinity Purified Rabbit Polyclonal Antibody.

Isotype: IgG

Conjugation: Unconjugated

Specificity: This TRPC1 antibody is generated from rabbits immunized with a KLH conjugated synthetic peptide between 765-793 amino acids from the C-terminal region of human TRPC1.

Storage: Aliquot and store at -20 °C. Avoid repeated freeze/thaw cycles.

Swiss Prot: [P48995](#)

Abbexa Ltd, Innovation Centre, Cambridge Science Park, Cambridge, CB4 0EY, UK
Telephone: +44 (0) 1223 755950 - Fax: +44 (0) 1223 755951 - E-Mail: info@abbexa.com

Buffer: PBS with 0.09% (W/V) sodium azide. This antibody is purified through a protein A column, followed by peptide affinity purification.

Note: This product is for research use only.