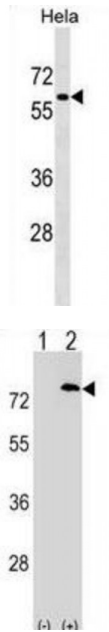


Abbexa Ltd, Innovation Centre, Cambridge Science Park, Cambridge, CB4 0EY, UK  
 Telephone: +44 (0) 1223 755950 - Fax: +44 (0) 1223 755951 - E-Mail: info@abbexa.com

**Pancreatic Differentiation Protein 2 (PAF1) Antibody**

Catalogue No.: abx029228



PAF1, parafibromin (CDC73; MIM 607393), LEO1 (MIM 610507), and CTR9 (MIM 609366) form the PAF protein complex that associates with the RNA polymerase II subunit POLR2A (MIM 180660) and with a histone methyltransferase complex (Rozenblatt-Rosen et al., 2005 [PubMed 15632063]). The PAF complex also has a role in histone monoubiquitination (Zhu et al., 2005 [PubMed 16307923]).[supplied by OMIM].

**Target:** PAF1  
**Reactivity:** Human  
**Host:** Rabbit  
**Clonality:** Polyclonal  
**Tested Applications:** WB

**Recommended dilutions:** Optimal dilutions/concentrations should be determined by the end user.

**Immunogen:** Human PAF1.  
**Purification:** Peptide Affinity Purified Rabbit Polyclonal Antibody.  
**Isotype:** IgG  
**Conjugation:** Unconjugated

Abbexa Ltd, Innovation Centre, Cambridge Science Park, Cambridge, CB4 0EY, UK  
Telephone: +44 (0) 1223 755950 - Fax: +44 (0) 1223 755951 - E-Mail: info@abbexa.com

- Specificity:** This PAF1 antibody is generated from rabbits immunized with a KLH conjugated synthetic peptide between 439-467 amino acids from the C-terminal region of human PAF1.
- Storage:** Aliquot and store at -20 °C. Avoid repeated freeze/thaw cycles.
- Swiss Prot:** [Q8N7H5](#)
- Gene Symbol:** PAF1
- Buffer:** PBS with 0.09% (W/V) sodium azide. This antibody is purified through a protein A column, followed by peptide affinity purification.
- Note:** This product is for research use only.