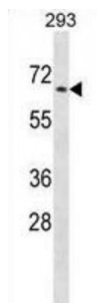


## Protein Tyrosine Phosphatase, Non Receptor Type 5 (PTPN5) Antibody

Catalogue No.: abx029236



STEP (Protein-tyrosine phosphatase striatum-enriched) is a neural-specific protein-tyrosine phosphatase. It is also known as PTPN5 (tyrosine-protein phosphatase, non-receptor type 5). STEP immunoreactive areas are most intense in the regions of the CNS receiving a dopaminergic input (e.g. striatum, basal ganglia). STEP is part of the NMDA receptor (R) complex and inhibits NMDAR single-channel activity and NMDAR-mediated synaptic current. Phosphorylation of STEP, via D1 and PKA activation by dopamine, decreases the activity of STEP by reducing its affinity for substrate.

**Target:** PTPN5

**Reactivity:** Human

**Host:** Rabbit

**Clonality:** Polyclonal

**Tested Applications:** WB

**Recommended dilutions:** Optimal dilutions/concentrations should be determined by the end user.

**Immunogen:** Human PTPN5.

**Purification:** Peptide Affinity Purified Rabbit Polyclonal Antibody.

**Isotype:** IgG

**Conjugation:** Unconjugated

**Specificity:** This PTPN5 antibody is generated from rabbits immunized with a KLH conjugated synthetic peptide between 1-30 amino acids from the N-terminal region of human PTPN5.

**Storage:** Aliquot and store at -20 °C. Avoid repeated freeze/thaw cycles.

**Swiss Prot:** [P54829](#)

Abbexa Ltd, Innovation Centre, Cambridge Science Park, Cambridge, CB4 0EY, UK  
Telephone: +44 (0) 1223 755950 - Fax: +44 (0) 1223 755951 - E-Mail: [info@abbexa.com](mailto:info@abbexa.com)

**Buffer:** PBS with 0.09% (W/V) sodium azide. This antibody is purified through a protein A column, followed by peptide affinity purification.

**Note:** This product is for research use only.