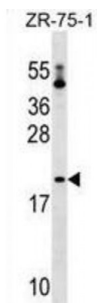


Abbexa Ltd, Innovation Centre, Cambridge Science Park, Cambridge, CB4 0EY, UK  
Telephone: +44 (0) 1223 755950 - Fax: +44 (0) 1223 755951 - E-Mail: [info@abbexa.com](mailto:info@abbexa.com)

## Probable Peptidyl-tRNA Hydrolase (PTRH1) Antibody

Catalogue No.: abx029767



C9orf115 belongs to the Peptidyl-tRNA hydrolase (PTH) family. Peptidyl-tRNA hydrolase (PTH) is a monomeric protein that cleaves the ester bond linking the nascent peptide and tRNA when peptidyl-tRNA is released prematurely from the ribosome. This ensures the recycling of peptidyl-tRNAs into tRNAs produced through abortion of translation and is essential for cell viability.

**Target:** PTRH1

**Reactivity:** Human

**Host:** Rabbit

**Clonality:** Polyclonal

**Tested Applications:** WB

**Recommended dilutions:** Optimal dilutions/concentrations should be determined by the end user.

**Immunogen:** Human PTRH1.

**Purification:** Peptide Affinity Purified Rabbit Polyclonal Antibody.

**Isotype:** IgG

**Conjugation:** Unconjugated

**Specificity:** This PTRH1 antibody is generated from rabbits immunized with a KLH conjugated synthetic peptide between 102-129 amino acids from the Central region of human PTRH1.

**Storage:** Aliquot and store at -20 °C. Avoid repeated freeze/thaw cycles.

**Swiss Prot:** [Q86Y79](#)

**Gene Symbol:** PTRH1

Abbexa Ltd, Innovation Centre, Cambridge Science Park, Cambridge, CB4 0EY, UK  
Telephone: +44 (0) 1223 755950 - Fax: +44 (0) 1223 755951 - E-Mail: [info@abbexa.com](mailto:info@abbexa.com)

**Buffer:** PBS with 0.09% (W/V) sodium azide. This antibody is purified through a protein A column, followed by peptide affinity purification.

**Note:** This product is for research use only.