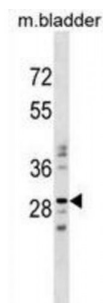


Abbexa Ltd, Innovation Centre, Cambridge Science Park, Cambridge, CB4 0EY, UK
Telephone: +44 (0) 1223 755950 - Fax: +44 (0) 1223 755951 - E-Mail: info@abbexa.com

Nucleotide Binding Protein Like (NUBPL) Antibody

Catalogue No.: abx029974



Respiratory complex I (NADH:ubiquinone oxidoreductase EC 1.6.5.3) is a large mitochondrial inner membrane enzyme consisting of 45 subunits and 8 iron-sulfur (Fe/S) clusters. NUBPL, or IND1, is an Fe/S protein that plays a critical role in the assembly of respiratory complex I, likely by transferring Fe/S into the Fe/S-containing complex I subunits (Sheftel et al., 2009 [PubMed 19752196]).

Target: NUBPL

Reactivity: Human, Mouse

Host: Rabbit

Clonality: Polyclonal

Tested Applications: WB

Recommended dilutions: Optimal dilutions/concentrations should be determined by the end user.

Immunogen: Human NUBPL.

Purification: Peptide Affinity Purified Rabbit Polyclonal Antibody.

Isotype: IgG

Conjugation: Unconjugated

Specificity: This NUBPL antibody is generated from rabbits immunized with a KLH conjugated synthetic peptide between 40-67 amino acids from the N-terminal region of human NUBPL.

Storage: Aliquot and store at -20 °C. Avoid repeated freeze/thaw cycles.

Swiss Prot: [Q8TB37](#)

Gene Symbol: NUBPL

Abbexa Ltd, Innovation Centre, Cambridge Science Park, Cambridge, CB4 0EY, UK
Telephone: +44 (0) 1223 755950 - Fax: +44 (0) 1223 755951 - E-Mail: info@abbexa.com

Buffer: PBS with 0.09% (W/V) sodium azide. This antibody is purified through a protein A column, followed by peptide affinity purification.

Note: This product is for research use only.