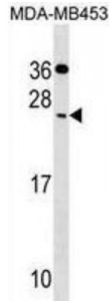


Cell Death Inducing DFFA Like Effector C (CIDEc) Antibody

Catalogue No.: abx030135



CIDEc Antibody western blot analysis in MDA-MB453 cell line lysates (35 ug/lane). This demonstrates the CIDEc antibody detected the CIDEc protein (arrow).

DNA fragmentation factor (DFF) induces the fragmentation of DNA associated with apoptosis. A novel family of cell death-inducing DFF45 (MIM 601882) like effectors (CIDEs), including CIDEc, can also promote apoptosis.

Target: CIDEc

Reactivity: Human

Host: Rabbit

Clonality: Polyclonal

Tested Applications: WB

Recommended dilutions: ELISA: 1/1000. Optimal dilutions/concentrations should be determined by the end user.

Immunogen: Human CIDEc (97-126 AA).

Purification: This antibody is purified through a protein A column, followed by peptide affinity purification.

Isotype: IgG

Conjugation: Unconjugated

Specificity: This CIDEc antibody is generated from rabbits immunized with a KLH conjugated synthetic peptide between 97-126 amino acids from the Central region of human CIDEc.

Storage: Store at 2-8 °C for up to two weeks. Aliquot and store at -20 °C for long term storage. Avoid repeated freeze/thaw cycles.

Molecular Weight: 26.8 kDa (Calculated)

Swiss Prot: [Q96AQ7](#)

Abbexa Ltd, Innovation Centre, Cambridge Science Park, Cambridge, CB4 0EY, UK
Telephone: +44 (0) 1223 755950 - Fax: +44 (0) 1223 755951 - E-Mail: info@abbexa.com

Buffer: PBS with 0.09% (W/V) sodium azide.

Note: This product is for research use only.