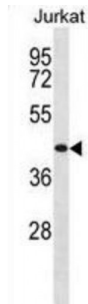


## Thyrotropin-Releasing Hormone Receptor (TRHR) Antibody

Catalogue No.: abx030262



Thyrotropin-releasing hormone (TRH; MIM 275120), a small neuropeptide, is widely distributed throughout the central and peripheral nervous system as well as in extraneural tissues. The peptide is synthesized in the hypothalamus and transported by the portal vascular system to the anterior pituitary where it acts on thyrotropic and lactotropic cells to promote secretion of TSH and prolactin, respectively. Thyrotropin-releasing hormone receptor is a G protein-coupled receptor that activates the inositol phospholipid-calcium-protein kinase C transduction pathway upon the binding of TRH. The TRHR gene is expressed in the thyrotrope cells of the anterior pituitary.

**Target:** TRHR

**Reactivity:** Human

**Host:** Rabbit

**Clonality:** Polyclonal

**Tested Applications:** WB

**Recommended dilutions:** Optimal dilutions/concentrations should be determined by the end user.

**Immunogen:** Human TRHR.

**Purification:** Peptide Affinity Purified Rabbit Polyclonal Antibody.

**Isotype:** IgG

**Conjugation:** Unconjugated

**Specificity:** This TRHR antibody is generated from rabbits immunized with a KLH conjugated synthetic peptide between 209-238 amino acids from the Central region of human TRHR.

**Storage:** Aliquot and store at -20 °C. Avoid repeated freeze/thaw cycles.

**Swiss Prot:** [P34981](#)

Abbexa Ltd, Innovation Centre, Cambridge Science Park, Cambridge, CB4 0EY, UK  
Telephone: +44 (0) 1223 755950 - Fax: +44 (0) 1223 755951 - E-Mail: [info@abbexa.com](mailto:info@abbexa.com)

**Gene Symbol:** TRHR

**Buffer:** PBS with 0.09% (W/V) sodium azide. This antibody is purified through a protein A column, followed by peptide affinity purification.

**Note:** This product is for research use only.