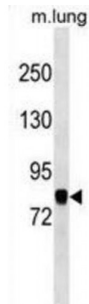


## Component of Oligomeric Golgi Complex 7 (COG7) Antibody

Catalogue No.: abx030327



The protein encoded by this gene resides in the golgi, and constitutes one of the 8 subunits of the conserved oligomeric Golgi (COG) complex, which is required for normal golgi morphology and localization. Mutations in this gene are associated with the congenital disorder of glycosylation type IIe.

**Target:** COG7

**Reactivity:** Human, Mouse

**Host:** Rabbit

**Clonality:** Polyclonal

**Tested Applications:** WB

**Recommended dilutions:** Optimal dilutions/concentrations should be determined by the end user.

**Immunogen:** Human COG7.

**Purification:** Peptide Affinity Purified Rabbit Polyclonal Antibody.

**Isotype:** IgG

**Conjugation:** Unconjugated

**Specificity:** This COG7 antibody is generated from rabbits immunized with a KLH conjugated synthetic peptide between 725-753 amino acids from the C-terminal region of human COG7.

**Storage:** Aliquot and store at -20 °C. Avoid repeated freeze/thaw cycles.

**Swiss Prot:** [P83436](#)

**Buffer:** PBS with 0.09% (W/V) sodium azide. This antibody is purified through a protein A column, followed by peptide affinity purification.

Abbexa Ltd, Innovation Centre, Cambridge Science Park, Cambridge, CB4 0EY, UK  
Telephone: +44 (0) 1223 755950 - Fax: +44 (0) 1223 755951 - E-Mail: [info@abbexa.com](mailto:info@abbexa.com)

**Note:** This product is for research use only.