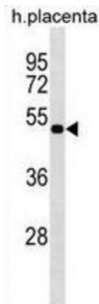


## LIM/homeobox Protein Lhx8 (LHX8) Antibody

Catalogue No.: abx030378



Members of the LIM homeobox gene family, such as LHX8, encode transcription regulators that share common structural features. They all contain 2 tandemly repeated cysteine-rich double-zinc finger motifs, called LIM domains, in addition to a homeodomain. The homeodomain is a DNA-binding domain, and the LIM domains are essential for regulating the activity of these molecules by interacting with other proteins. Members of the LIM homeobox gene family are required for the patterning or the specification and differentiation of different cell types during embryonic development (Zhao et al., 1999 [PubMed 10611327]).

**Target:** LHX8

**Reactivity:** Human

**Host:** Rabbit

**Clonality:** Polyclonal

**Tested Applications:** WB

**Recommended dilutions:** Optimal dilutions/concentrations should be determined by the end user.

**Immunogen:** Human LHX8.

**Purification:** Peptide Affinity Purified Rabbit Polyclonal Antibody.

**Isotype:** IgG

**Conjugation:** Unconjugated

**Specificity:** This LHX8 antibody is generated from rabbits immunized with a KLH conjugated synthetic peptide between 205-232 amino acids from the Central region of human LHX8.

**Storage:** Aliquot and store at -20 °C. Avoid repeated freeze/thaw cycles.

**Swiss Prot:** [Q68G74](#)

Abbexa Ltd, Innovation Centre, Cambridge Science Park, Cambridge, CB4 0EY, UK  
Telephone: +44 (0) 1223 755950 - Fax: +44 (0) 1223 755951 - E-Mail: [info@abbexa.com](mailto:info@abbexa.com)

**Buffer:** PBS with 0.09% (W/V) sodium azide. This antibody is purified through a protein A column, followed by peptide affinity purification.

**Note:** This product is for research use only.