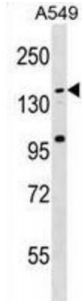


Abbexa Ltd, Innovation Centre, Cambridge Science Park, Cambridge, CB4 0EY, UK
Telephone: +44 (0) 1223 755950 - Fax: +44 (0) 1223 755951 - E-Mail: info@abbexa.com

Coiled-Coil Domain-Containing Protein 144C (CCDC144C) Antibody

Catalogue No.: abx030550



CCDC144C Antibody is a rabbit polyclonal against CCDC144C.

Target: CCDC144C

Reactivity: Human

Host: Rabbit

Clonality: Polyclonal

Tested Applications: WB

Recommended dilutions: WB: 1/1000. Optimal dilutions/concentrations should be determined by the end user.

Immunogen: 1064-1090 aa.

Purification: Peptide Affinity Purified Rabbit Polyclonal Antibody.

Isotype: IgG

Conjugation: Unconjugated

Specificity: This CCDC144C antibody is generated from rabbits immunized with a KLH conjugated synthetic peptide between 1064-1090 amino acids from the C-terminal region of human CCDC144C.

Storage: Aliquot and store at -20 °C. Avoid repeated freeze/thaw cycles.

Molecular Weight: 143.11 kDa

Swiss Prot: [Q8IYA2](#)

Gene Symbol: CCDC144C

Abbexa Ltd, Innovation Centre, Cambridge Science Park, Cambridge, CB4 0EY, UK
Telephone: +44 (0) 1223 755950 - Fax: +44 (0) 1223 755951 - E-Mail: info@abbexa.com

Buffer: PBS with 0.09% (W/V) sodium azide. This antibody is purified through a protein A column, followed by peptide affinity purification.

Note: This product is for research use only.