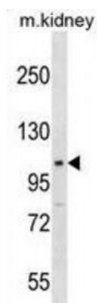


Abbexa Ltd, Innovation Centre, Cambridge Science Park, Cambridge, CB4 0EY, UK
Telephone: +44 (0) 1223 755950 - Fax: +44 (0) 1223 755951 - E-Mail: info@abbexa.com

Signal Transducer And Activator of Transcription 2 (Stat2) Antibody

Catalogue No.: abx030655



Transcription factor that binds to the IFN-stimulated response element (ISRE) and to the GAS element. This multiprotein transcription factor is termed ISGF3.

Target: Mouse Stat2

Reactivity: Mouse

Host: Rabbit

Clonality: Polyclonal

Tested Applications: WB

Recommended dilutions: Optimal dilutions/concentrations should be determined by the end user.

Immunogen: Mouse Stat2.

Purification: Peptide Affinity Purified Rabbit Polyclonal Antibody.

Isotype: IgG

Conjugation: Unconjugated

Specificity: This Mouse Stat2 antibody is generated from rabbits immunized with a KLH conjugated synthetic peptide between 600-626 amino acids from the Central region of mouse Stat2.

Storage: Aliquot and store at -20 °C. Avoid repeated freeze/thaw cycles.

Swiss Prot: [Q9WVL2](#)

Buffer: PBS with 0.09% (W/V) sodium azide. This antibody is purified through a protein A column, followed by peptide affinity purification.

Note: This product is for research use only.