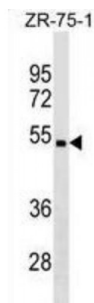


## Carbohydrate Sulfotransferase 5 (CHST5) Antibody

Catalogue No.: abx030661



The carbohydrates of glycoconjugates are highly diverse structures with variation in monosaccharide composition, glycosidic linkage positions, and branching of chains. Further diversity is added by the covalent addition of sulfate moieties to particular hydroxyl groups and amino groups of saccharides. The sulfate modifications of glycoproteins can be extensive in amount and frequently occur at high density. They can have a profound effect on the physicochemical properties of the glycoconjugates, at least in part through the addition of negative charge. Carbohydrate sulfation plays a critical role in many biologic processes. CHST5 belongs to the GST family of sulfotransferases, which also includes CHST1 (MIM 603797), CHST2 (MIM 603798), CHST3 (MIM 603799), and LSST. These enzymes are 6-O-sulfotransferases, which add sulfate to C6 of galactose (Gal), N-acetylgalactosamine (GalNAc), or N-acetylglucosamine (GlcNAc) (Lee et al., 1999 [PubMed 10491328]).

**Target:** CHST5

**Reactivity:** Human

**Host:** Rabbit

**Clonality:** Polyclonal

**Tested Applications:** WB

**Recommended dilutions:** Optimal dilutions/concentrations should be determined by the end user.

**Immunogen:** Human CHST5.

**Purification:** Peptide Affinity Purified Rabbit Polyclonal Antibody.

**Isotype:** IgG

**Conjugation:** Unconjugated

**Specificity:** This CHST5 antibody is generated from rabbits immunized with a KLH conjugated synthetic peptide between 275-302 amino acids from the C-terminal region of human CHST5.

**Storage:** Aliquot and store at -20 °C. Avoid repeated freeze/thaw cycles.

Abbexa Ltd, Innovation Centre, Cambridge Science Park, Cambridge, CB4 0EY, UK  
Telephone: +44 (0) 1223 755950 - Fax: +44 (0) 1223 755951 - E-Mail: info@abbexa.com

**Swiss Prot:** [Q9GZS9](#)

**Gene Symbol:** CHST5

**Buffer:** PBS with 0.09% (W/V) sodium azide. This antibody is purified through a protein A column, followed by peptide affinity purification.

**Note:** This product is for research use only.