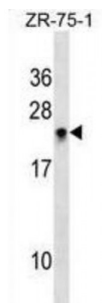


Abbexa Ltd, Innovation Centre, Cambridge Science Park, Cambridge, CB4 0EY, UK
Telephone: +44 (0) 1223 755950 - Fax: +44 (0) 1223 755951 - E-Mail: info@abbexa.com

Ras Homolog Family Member H (RHOH) Antibody

Catalogue No.: abx030677



The protein encoded by this gene is a member of the Ras superfamily of small GTPases. Expression of a chimeric transcript of LAZ3 and this gene has been reported as a result of the translocation t (3;4) in non-Hodgkin's lymphomas. This gene encodes a small G-like protein, and unlike most other small G proteins which are expressed ubiquitously, this gene is transcribed only in hemopoietic cells.

Target: RHOH

Reactivity: Human

Host: Rabbit

Clonality: Polyclonal

Tested Applications: WB

Recommended dilutions: Optimal dilutions/concentrations should be determined by the end user.

Immunogen: Human RHOH.

Purification: Peptide Affinity Purified Rabbit Polyclonal Antibody.

Isotype: IgG

Conjugation: Unconjugated

Specificity: This RHOH antibody is generated from rabbits immunized with a KLH conjugated synthetic peptide between 155-184 amino acids from the C-terminal region of human RHOH.

Storage: Aliquot and store at -20 °C. Avoid repeated freeze/thaw cycles.

Swiss Prot: [Q15669](#)

Abbexa Ltd, Innovation Centre, Cambridge Science Park, Cambridge, CB4 0EY, UK
Telephone: +44 (0) 1223 755950 - Fax: +44 (0) 1223 755951 - E-Mail: info@abbexa.com

Buffer: PBS with 0.09% (W/V) sodium azide. This antibody is purified through a protein A column, followed by peptide affinity purification.

Note: This product is for research use only.