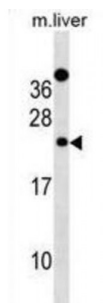


Abbexa Ltd, Innovation Centre, Cambridge Science Park, Cambridge, CB4 0EY, UK
Telephone: +44 (0) 1223 755950 - Fax: +44 (0) 1223 755951 - E-Mail: info@abbexa.com

Derlin-2 (DERL2) Antibody

Catalogue No.: abx030935



Functional component of endoplasmic reticulum-associated degradation (ERAD) for misfolded luminal glycoproteins, but not that of misfolded nonglycoproteins. May act by forming a channel that allows the retrotranslocation of misfolded glycoproteins into the cytosol where they are ubiquitinated and degraded by the proteasome. May mediate the interaction between VCP and the degradation substrate (By similarity).

Target:	Derl2
Reactivity:	Mouse
Host:	Rabbit
Clonality:	Polyclonal
Tested Applications:	WB

Recommended dilutions: Optimal dilutions/concentrations should be determined by the end user.

Immunogen:	Mouse Derl2.
Purification:	Peptide Affinity Purified Rabbit Polyclonal Antibody.
Isotype:	IgG
Conjugation:	Unconjugated
Specificity:	This Mouse Derl2 antibody is generated from rabbits immunized with a KLH conjugated synthetic peptide between 191-219 amino acids from the C-terminal region of mouse Derl2.
Storage:	Aliquot and store at -20 °C. Avoid repeated freeze/thaw cycles.
Swiss Prot:	Q8BNI4

Abbexa Ltd, Innovation Centre, Cambridge Science Park, Cambridge, CB4 0EY, UK
Telephone: +44 (0) 1223 755950 - Fax: +44 (0) 1223 755951 - E-Mail: info@abbexa.com

Buffer: PBS with 0.09% (W/V) sodium azide. This antibody is purified through a protein A column, followed by peptide affinity purification.

Note: This product is for research use only.