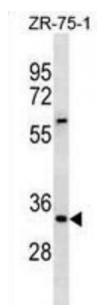


Abbexa Ltd, Innovation Centre, Cambridge Science Park, Cambridge, CB4 0EY, UK
Telephone: +44 (0) 1223 755950 - Fax: +44 (0) 1223 755951 - E-Mail: info@abbexa.com

Inhibitor of Growth Protein 2 (ING2) Antibody

Catalogue No.: abx030998



This gene is a member of the inhibitor of growth (ING) family. Members of the ING family associate with and modulate the activity of histone acetyltransferase (HAT) and histone deacetylase (HDAC) complexes and function in DNA repair and apoptosis.

Target:	ING2
Reactivity:	Human
Host:	Rabbit
Clonality:	Polyclonal
Tested Applications:	WB
Recommended dilutions:	Optimal dilutions/concentrations should be determined by the end user.
Immunogen:	Human ING2.
Purification:	Peptide Affinity Purified Rabbit Polyclonal Antibody.
Isotype:	IgG
Conjugation:	Unconjugated
Specificity:	This ING2 antibody is generated from rabbits immunized with a KLH conjugated synthetic peptide between 112-141 amino acids from the Central region of human ING2.
Storage:	Aliquot and store at -20 °C. Avoid repeated freeze/thaw cycles.
Swiss Prot:	Q9H160
Gene Symbol:	ING2

Abbexa Ltd, Innovation Centre, Cambridge Science Park, Cambridge, CB4 0EY, UK
Telephone: +44 (0) 1223 755950 - Fax: +44 (0) 1223 755951 - E-Mail: info@abbexa.com

Buffer: PBS with 0.09% (W/V) sodium azide. This antibody is purified through a protein A column, followed by peptide affinity purification.

Note: This product is for research use only.