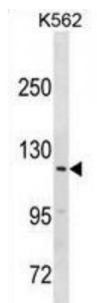


Abbexa Ltd, Innovation Centre, Cambridge Science Park, Cambridge, CB4 0EY, UK
Telephone: +44 (0) 1223 755950 - Fax: +44 (0) 1223 755951 - E-Mail: info@abbexa.com

Probable E3 Ubiquitin-Protein Ligase HERC3 (HERC3) Antibody

Catalogue No.: abx031069



HERC3 belongs to the HERC family of ubiquitin ligases, all of which contain a HECT domain and at least 1 RCC1 (MIM 179710) like domain (RLD). The 350-amino acid HECT domain is predicted to catalyze the formation of a thioester with ubiquitin before transferring it to a substrate, and the RLD is predicted to act as a guanine nucleotide exchange factor for small G proteins (Hochrainer et al., 2005 [PubMed 15676274]).

Target: HERC3

Reactivity: Human

Host: Rabbit

Clonality: Polyclonal

Tested Applications: WB

Recommended dilutions: Optimal dilutions/concentrations should be determined by the end user.

Immunogen: Human HERC3.

Purification: Peptide Affinity Purified Rabbit Polyclonal Antibody.

Isotype: IgG

Conjugation: Unconjugated

Specificity: This HERC3 antibody is generated from rabbits immunized with a KLH conjugated synthetic peptide between 51-77 amino acids from the N-terminal region of human HERC3.

Storage: Aliquot and store at -20 °C. Avoid repeated freeze/thaw cycles.

Swiss Prot: [Q15034](#)

Abbexa Ltd, Innovation Centre, Cambridge Science Park, Cambridge, CB4 0EY, UK
Telephone: +44 (0) 1223 755950 - Fax: +44 (0) 1223 755951 - E-Mail: info@abbexa.com

Buffer: PBS with 0.09% (W/V) sodium azide. This antibody is purified through a protein A column, followed by peptide affinity purification.

Note: This product is for research use only.