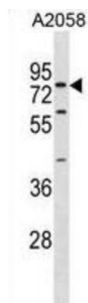


Abbexa Ltd, Innovation Centre, Cambridge Science Park, Cambridge, CB4 0EY, UK
Telephone: +44 (0) 1223 755950 - Fax: +44 (0) 1223 755951 - E-Mail: info@abbexa.com

Synaptotagmin 16 (SYT16) Antibody

Catalogue No.: abx031134



SYT16 may be involved in the trafficking and exocytosis of secretory vesicles in non-neuronal tissues. Is Ca (2+) independent.

Target: SYT16

Reactivity: Human

Host: Rabbit

Clonality: Polyclonal

Tested Applications: WB

Recommended dilutions: Optimal dilutions/concentrations should be determined by the end user.

Immunogen: Human SYT16.

Purification: Peptide Affinity Purified Rabbit Polyclonal Antibody.

Isotype: IgG

Conjugation: Unconjugated

Specificity: This SYT16 antibody is generated from rabbits immunized with a KLH conjugated synthetic peptide between 297-325 amino acids from the Central region of human SYT16.

Storage: Aliquot and store at -20 °C. Avoid repeated freeze/thaw cycles.

Swiss Prot: [Q17RD7](#)

Buffer: PBS with 0.09% (W/V) sodium azide. This antibody is purified through a protein A column, followed by peptide affinity purification.

Note: This product is for research use only.