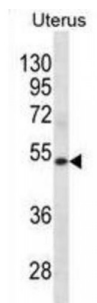


Abbexa Ltd, Innovation Centre, Cambridge Science Park, Cambridge, CB4 0EY, UK
Telephone: +44 (0) 1223 755950 - Fax: +44 (0) 1223 755951 - E-Mail: info@abbexa.com

Keratin, Type II Cytoskeletal 72 (KRT72) Antibody

Catalogue No.: abx031225



Keratins are intermediate filament proteins responsible for the structural integrity of epithelial cells. The type II keratins consist of basic or neutral proteins which are arranged in pairs of heterotypic keratin chains coexpressed during differentiation of simple and stratified epithelial tissues. This gene encodes a type II keratin that is specifically expressed in the inner root sheath of hair follicles. The type II keratins are clustered in a region of chromosome 12q12-q13. Multiple transcript variants encoding different isoforms have been found for this gene.

Target: KRT72

Reactivity: Human

Host: Rabbit

Clonality: Polyclonal

Tested Applications: WB

Recommended dilutions: Optimal dilutions/concentrations should be determined by the end user.

Immunogen: Human KRT72.

Purification: Peptide Affinity Purified Rabbit Polyclonal Antibody.

Isotype: IgG

Conjugation: Unconjugated

Specificity: This KRT72 antibody is generated from rabbits immunized with a KLH conjugated synthetic peptide between 313-342 amino acids from the Central region of human KRT72.

Storage: Aliquot and store at -20 °C. Avoid repeated freeze/thaw cycles.

Swiss Prot: [Q14CN4](#)

Abbexa Ltd, Innovation Centre, Cambridge Science Park, Cambridge, CB4 0EY, UK
Telephone: +44 (0) 1223 755950 - Fax: +44 (0) 1223 755951 - E-Mail: info@abbexa.com

Buffer: PBS with 0.09% (W/V) sodium azide. This antibody is purified through a protein A column, followed by peptide affinity purification.

Note: This product is for research use only.