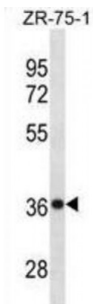


Abbexa Ltd, Innovation Centre, Cambridge Science Park, Cambridge, CB4 0EY, UK
Telephone: +44 (0) 1223 755950 - Fax: +44 (0) 1223 755951 - E-Mail: info@abbexa.com

Cysteine And Histidine-Rich Domain-Containing Protein 1 (CHORDC1) Antibody

Catalogue No.: abx031285



CHORDC1 may play a role in the regulation of NOD1 via its interaction with HSP90AA1 (By similarity).

Target: CHORDC1

Reactivity: Human

Host: Rabbit

Clonality: Polyclonal

Tested Applications: WB

Recommended dilutions: Optimal dilutions/concentrations should be determined by the end user.

Immunogen: Human CHORDC1.

Purification: Peptide Affinity Purified Rabbit Polyclonal Antibody.

Isotype: IgG

Conjugation: Unconjugated

Specificity: This CHORDC1 antibody is generated from rabbits immunized with a KLH conjugated synthetic peptide between 127-156 amino acids from the Central region of human CHORDC1.

Storage: Aliquot and store at -20 °C. Avoid repeated freeze/thaw cycles.

Swiss Prot: [Q9UHD1](#)

Buffer: PBS with 0.09% (W/V) sodium azide. This antibody is purified through a protein A column, followed by peptide affinity purification.

Note: This product is for research use only.