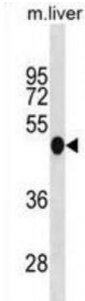


Mouse Irf3 Antibody

Catalogue No.: abx031370



Mediates interferon-stimulated response element (ISRE) promoter activation. Functions as a molecular switch for antiviral activity. DsRNA generated during the course of a viral infection leads to IRF3 phosphorylation on the C-terminal serine/threonine cluster. This induces a conformational change, leading to its dimerization, nuclear localization and association with CREB binding protein (CREBBP) to form dsRNA-activated factor 1 (DRAF1), a complex which activates the transcription of genes under the control of ISRE. The complex binds to the IE and PRDIII regions on the IFN-alpha and IFN-beta promoters respectively. IRF-3 does not have any transcription activation domains (By similarity).

Target: Mouse Irf3

Reactivity: Mouse

Host: Rabbit

Clonality: Polyclonal

Tested Applications: WB

Recommended dilutions: Optimal dilutions/concentrations should be determined by the end user.

Immunogen: Mouse Irf3.

Purification: Peptide Affinity Purified Rabbit Polyclonal Antibody.

Isotype: IgG

Conjugation: Unconjugated

Specificity: This Mouse Irf3 antibody is generated from rabbits immunized with a KLH conjugated synthetic peptide between 46-72 amino acids from the N-terminal region of mouse Irf3.

Storage: Aliquot and store at -20 °C. Avoid repeated freeze/thaw cycles.

Swiss Prot: [P70671](#)

Abbexa Ltd, Innovation Centre, Cambridge Science Park, Cambridge, CB4 0EY, UK
Telephone: +44 (0) 1223 755950 - Fax: +44 (0) 1223 755951 - E-Mail: info@abbexa.com

Buffer: PBS with 0.09% (W/V) sodium azide. This antibody is purified through a protein A column, followed by peptide affinity purification.

Note: This product is for research use only.