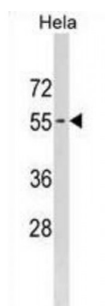


Abbexa Ltd, Innovation Centre, Cambridge Science Park, Cambridge, CB4 0EY, UK
Telephone: +44 (0) 1223 755950 - Fax: +44 (0) 1223 755951 - E-Mail: info@abbexa.com

Phosphatidylinositol Glycan Anchor Biosynthesis Class B (PIGB) Antibody

Catalogue No.: abx031401



This gene encodes a transmembrane protein that is located in the endoplasmic reticulum and is involved in GPI-anchor biosynthesis. The glycosylphosphatidylinositol (GPI) anchor is a glycolipid found on many blood cells and serves to anchor proteins to the cell surface. This gene is thought to encode a member of a family of dolichol-phosphate-mannose (Dol-P-Man) dependent mannosyltransferases.

Target:	PIGB
Reactivity:	Human
Host:	Rabbit
Clonality:	Polyclonal
Tested Applications:	WB

Recommended dilutions: Optimal dilutions/concentrations should be determined by the end user.

Immunogen:	Human PIGB.
Purification:	Peptide Affinity Purified Rabbit Polyclonal Antibody.
Isotype:	IgG
Conjugation:	Unconjugated
Specificity:	This PIGB antibody is generated from rabbits immunized with a KLH conjugated synthetic peptide between 28-56 amino acids from the N-terminal region of human PIGB.
Storage:	Aliquot and store at -20 °C. Avoid repeated freeze/thaw cycles.
Swiss Prot:	Q92521

Abbexa Ltd, Innovation Centre, Cambridge Science Park, Cambridge, CB4 0EY, UK
Telephone: +44 (0) 1223 755950 - Fax: +44 (0) 1223 755951 - E-Mail: info@abbexa.com

Gene Symbol: PIGB

Buffer: PBS with 0.09% (W/V) sodium azide. This antibody is purified through a protein A column, followed by peptide affinity purification.

Note: This product is for research use only.