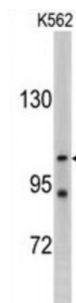


Abbexa Ltd, Innovation Centre, Cambridge Science Park, Cambridge, CB4 0EY, UK  
Telephone: +44 (0) 1223 755950 - Fax: +44 (0) 1223 755951 - E-Mail: [info@abbexa.com](mailto:info@abbexa.com)

## LLGL2, Scribble Cell Polarity Complex Component (LLGL2) Antibody

Catalogue No.: abx031574



The lethal (2) giant larvae protein of *Drosophila* plays a role in asymmetric cell division, epithelial cell polarity, and cell migration. LLGL2 is a protein similar to lethal (2) giant larvae of *Drosophila*. In fly, the protein's ability to localize cell fate determinants is regulated by the atypical protein kinase C (aPKC). In human, this protein interacts with aPKC-containing complexes and is cortically localized in mitotic cells.

**Target:** LLGL2

**Reactivity:** Human

**Host:** Rabbit

**Clonality:** Polyclonal

**Tested Applications:** WB

**Recommended dilutions:** Optimal dilutions/concentrations should be determined by the end user.

**Immunogen:** Human LLGL2.

**Purification:** Purified Rabbit Polyclonal Antibody.

**Isotype:** IgG

**Conjugation:** Unconjugated

**Specificity:** This LLGL2 antibody is generated from rabbits immunized with a KLH conjugated synthetic peptide between 940-973 amino acids from the C-terminal region of human LLGL2.

**Storage:** Aliquot and store at -20 °C. Avoid repeated freeze/thaw cycles.

**Swiss Prot:** [Q6P1M3](#)

Abbexa Ltd, Innovation Centre, Cambridge Science Park, Cambridge, CB4 0EY, UK  
Telephone: +44 (0) 1223 755950 - Fax: +44 (0) 1223 755951 - E-Mail: [info@abbexa.com](mailto:info@abbexa.com)

**Buffer:** PBS with 0.09% (W/V) sodium azide. This antibody is prepared by Saturated Ammonium Sulfate (SAS) precipitation followed by dialysis against PBS.

**Note:** This product is for research use only.