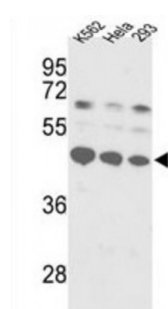
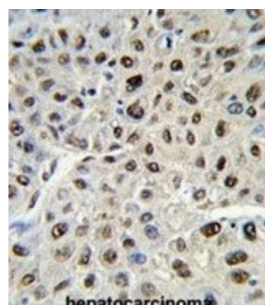


Abbexa Ltd, Innovation Centre, Cambridge Science Park, Cambridge, CB4 0EY, UK
Telephone: +44 (0) 1223 755950 - Fax: +44 (0) 1223 755951 - E-Mail: info@abbexa.com

Lupus La Protein (SSB) Antibody

Catalogue No.: abx031714



SSB is involved in diverse aspects of RNA metabolism, including binding and protecting 3-prime UUU (OH) elements of newly RNA polymerase III transcribed RNA, processing 5-prime and 3-prime ends of pre-tRNA precursors, acting as an RNA chaperone, and binding viral RNAs associated with hepatitis C virus. This protein was originally defined by its reactivity with autoantibodies from patients with Sjogren syndrome and systemic lupus erythematosus.

Target:	SSB
Reactivity:	Human
Host:	Rabbit
Clonality:	Polyclonal
Tested Applications:	WB, IHC

Recommended dilutions: Optimal dilutions/concentrations should be determined by the end user.

Immunogen:	Human SSB.
Purification:	Purified Rabbit Polyclonal Antibody.
Isotype:	IgG
Conjugation:	Unconjugated

Abbexa Ltd, Innovation Centre, Cambridge Science Park, Cambridge, CB4 0EY, UK
Telephone: +44 (0) 1223 755950 - Fax: +44 (0) 1223 755951 - E-Mail: info@abbexa.com

Specificity:	This SSB antibody is generated from rabbits immunized with a KLH conjugated synthetic peptide between 366-397 amino acids from the C-terminal region of human SSB.
Storage:	Aliquot and store at -20 °C. Avoid repeated freeze/thaw cycles.
Swiss Prot:	<u>P05455</u>
Buffer:	PBS with 0.09% (W/V) sodium azide. This antibody is prepared by Saturated Ammonium Sulfate (SAS) precipitation followed by dialysis against PBS.
Note:	This product is for research use only.