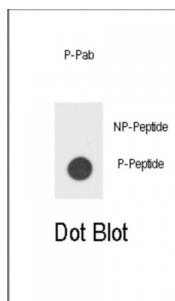


Abbexa Ltd, Innovation Centre, Cambridge Science Park, Cambridge, CB4 0EY, UK  
Telephone: +44 (0) 1223 755950 - Fax: +44 (0) 1223 755951 - E-Mail: [info@abbexa.com](mailto:info@abbexa.com)

## CSF2RB (pY766) Antibody

Catalogue No.: abx031871



CSF2RB (also known as CSF2RB) is a common beta chain of the high affinity receptor for IL-3, IL-5 and GM-CSF. Defective CSF2RB has been reported to be associated with protein alveolar proteinosis (PAP). PAP is an autosomal recessive fatal respiratory disease.

**Target:** CSF2RB (pY766)

**Reactivity:** Human

**Host:** Rabbit

**Clonality:** Polyclonal

**Tested Applications:** DB

**Recommended dilutions:** Optimal dilutions/concentrations should be determined by the end user.

**Immunogen:** Human IL3R (phospho-Tyr766).

**Purification:** Purified through a protein A column, followed by peptide affinity purification.

**Isotype:** IgG

**Conjugation:** Unconjugated

**Specificity:** This IL3R Antibody is generated from rabbits immunized with a KLH conjugated synthetic phosphopeptide corresponding to amino acid residues surrounding Y766 of human IL3R.

**Storage:** Aliquot and store at -20 °C. Avoid repeated freeze/thaw cycles.

**Swiss Prot:** [P32927](#)

**Buffer:** PBS with 0.09% (W/V) sodium azide.

**Note:** This product is for research use only.