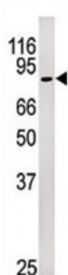
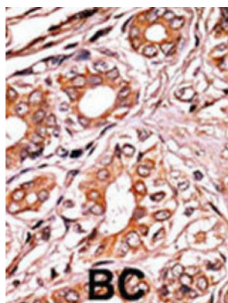


Abbexa Ltd, Innovation Centre, Cambridge Science Park, Cambridge, CB4 0EY, UK
Telephone: +44 (0) 1223 755950 - Fax: +44 (0) 1223 755951 - E-Mail: info@abbexa.com

Rb (pS249) Antibody

Catalogue No.: abx031906



RB1 likely acts as a regulator of other genes. It forms a complex with adenovirus E1A and with SV40 large T antigen, acts as a tumor suppressor, and may bind and modulate functionally certain cellular proteins with which T and E1A compete for pocket binding. RB1 is a potent inhibitor of E2F-mediated trans-activation, and also recruits and targets histone methyltransferase SUV39H1 leading to epigenetic transcriptional repression. This protein inhibits the intrinsic kinase activity of TAF1. Defects in RB1 are the cause of childhood cancer retinoblastoma (RB), a congenital malignant tumor that arises from the nuclear layers of the retina. Defects in RB1 are also a cause of bladder cancer and osteogenic sarcoma.

Target: Rb (pS249)

Reactivity: Human

Host: Rabbit

Clonality: Polyclonal

Tested Applications: WB, IHC

Recommended dilutions: Optimal dilutions/concentrations should be determined by the end user.

Immunogen: Human Rb (phospho-Ser249).

Purification: Purified Rabbit Polyclonal Antibody.

Isotype: IgG

Abbexa Ltd, Innovation Centre, Cambridge Science Park, Cambridge, CB4 0EY, UK
Telephone: +44 (0) 1223 755950 - Fax: +44 (0) 1223 755951 - E-Mail: info@abbexa.com

Conjugation: Unconjugated

Specificity: This Rb Antibody is generated from rabbits immunized with a KLH conjugated synthetic phosphopeptide corresponding to amino acid residues surrounding S249 of human Rb.

Storage: Aliquot and store at -20 °C. Avoid repeated freeze/thaw cycles.

Swiss Prot: [P06400](#)

Buffer: PBS with 0.09% (W/V) sodium azide. This antibody is first purified by protein G affinity chromatography. Then, the antibody fraction is peptide affinity purified in a 2-step procedure with control and phosphorylated peptides. The phospho-specific antibody is eluted with high and low pH buffers and neutralized immediately, followed by dialysis against PBS.

Note: This product is for research use only.