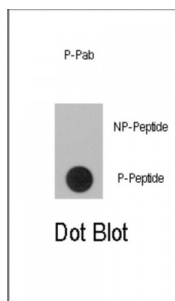


Abbexa Ltd, Innovation Centre, Cambridge Science Park, Cambridge, CB4 0EY, UK
Telephone: +44 (0) 1223 755950 - Fax: +44 (0) 1223 755951 - E-Mail: info@abbexa.com

RPS6KA1 (pS363) Antibody

Catalogue No.: abx031993



RSK1 is a member of the RSK (ribosomal S6 kinase) family of serine/threonine kinases. This kinase contains 2 nonidentical kinase catalytic domains and phosphorylates various substrates, including members of the mitogen-activated kinase (MAPK) signalling pathway. The activity of this protein has been implicated in controlling cell growth and differentiation.

Target: RPS6KA1 (pS363)

Reactivity: Human

Host: Rabbit

Clonality: Polyclonal

Tested Applications: DB

Recommended dilutions: Optimal dilutions/concentrations should be determined by the end user.

Immunogen: Human RPS6KA1 (phospho-Ser363).

Purification: Peptide Affinity Purified Rabbit Polyclonal Antibody.

Isotype: IgG

Conjugation: Unconjugated

Specificity: This RPS6KA1 Antibody is generated from rabbits immunized with a KLH conjugated synthetic phosphopeptide corresponding to amino acid residues surrounding S363 of human RPS6KA1.

Storage: Aliquot and store at -20 °C. Avoid repeated freeze/thaw cycles.

Swiss Prot: [Q15418](#)

Abbexa Ltd, Innovation Centre, Cambridge Science Park, Cambridge, CB4 0EY, UK
Telephone: +44 (0) 1223 755950 - Fax: +44 (0) 1223 755951 - E-Mail: info@abbexa.com

- Buffer:** PBS with 0.09% (W/V) sodium azide. Then, the antibody fraction is peptide affinity purified in a 2-step procedure with the control and phosphorylated peptides. The phospho-specific antibody is eluted with high and low pH buffers and neutralized immediately, followed by dialysis against PBS.
- Note:** This product is for research use only.