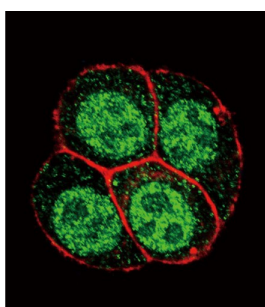
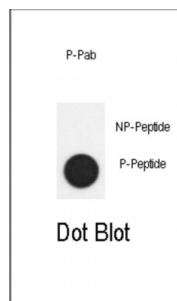


Abbexa Ltd, Innovation Centre, Cambridge Science Park, Cambridge, CB4 0EY, UK  
Telephone: +44 (0) 1223 755950 - Fax: +44 (0) 1223 755951 - E-Mail: [info@abbexa.com](mailto:info@abbexa.com)

## SMAD2 (pS118) Antibody

Catalogue No.: abx032062



The protein belongs to the SMAD, a family of proteins similar to the proteins of the *Drosophila* gene 'mothers against decapentaplegic' (Mad) and the *C. elegans* gene Sma. SMAD proteins are signal transducers and transcriptional modulators that mediate multiple signaling pathways. This protein mediates the signal of the transforming growth factor (TGF) beta, and thus regulates multiple cellular processes, such as cell proliferation, apoptosis, and differentiation. This protein is recruited to the TGF-beta receptors through its interaction with the SMAD anchor for receptor activation (SARA) protein. In response to TGF-beta signal, this protein is phosphorylated by the TGF-beta receptors. The phosphorylation induces the dissociation of this protein with SARA and the association with the family member SMAD4. The association with SMAD4 is important for the translocation of this protein into the nucleus, where it binds to target promoters and forms a transcription repressor complex with other cofactors. This protein can also be phosphorylated by activin type 1 receptor kinase, and mediates the signal from the activin.

**Target:** SMAD2 (pS118)

**Reactivity:** Human

**Host:** Rabbit

**Clonality:** Polyclonal

**Tested Applications:** IF/ICC, DB

**Recommended dilutions:** Optimal dilutions/concentrations should be determined by the end user.

**Immunogen:** Human SMAD2 (phospho-Ser118).

Abbexa Ltd, Innovation Centre, Cambridge Science Park, Cambridge, CB4 0EY, UK  
Telephone: +44 (0) 1223 755950 - Fax: +44 (0) 1223 755951 - E-Mail: [info@abbexa.com](mailto:info@abbexa.com)

|                      |  |
|----------------------|--|
| <b>Purification:</b> | Peptide Affinity Purified Rabbit Polyclonal Antibody.  |
| <b>Isotype:</b>      | IgG  |
| <b>Conjugation:</b>  | Unconjugated   |
| <b>Specificity:</b>  | This SMAD2 Antibody is generated from rabbits immunized with a KLH conjugated synthetic phosphopeptide corresponding to amino acid residues surrounding S118 of human SMAD2. |
| <b>Storage:</b>      | Aliquot and store at -20 °C. Avoid repeated freeze/thaw cycles.  |
| <b>Swiss Prot:</b>   | <a href="#"><u>Q15796</u></a>  |
| <b>Buffer:</b>       | PBS with 0.09% (W/V) sodium azide. This antibody is purified through a protein A column, followed by two-step phosphospecific peptide affinity purification.                 |
| <b>Note:</b>         | This product is for research use only.   |