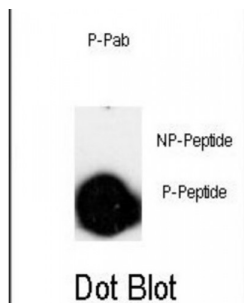


Abbexa Ltd, Innovation Centre, Cambridge Science Park, Cambridge, CB4 0EY, UK
Telephone: +44 (0) 1223 755950 - Fax: +44 (0) 1223 755951 - E-Mail: info@abbexa.com

LINGO-1 (LRRN6A) (pS596) Antibody

Catalogue No.: abx032074



LINGO-1 (LRR and Ig domain-containing Nogo Receptor interacting protein) is a nervous system-specific LRR-Ig-containing protein with an important role in CNS biology. LINGO-1 was discovered in a sequence database search for human SLIT homologs that were selectively expressed in the brain. LINGO-1 is a transmembrane protein that is a component of the Nogo-66 receptor complex. It binds NgR1 and p75 and is an additional functional component of the NgR1/p75 signaling complex.

Target: LINGO-1 (LRRN6A) (pS596)

Reactivity: Human

Host: Rabbit

Clonality: Polyclonal

Tested Applications: DB

Recommended dilutions: Optimal dilutions/concentrations should be determined by the end user.

Immunogen: Human LINGO-1 (LRRN6A) (phospho-Ser596).

Purification: Purified Rabbit Polyclonal Antibody.

Isotype: IgG

Conjugation: Unconjugated

Specificity: This LINGO-1 (LRRN6A) Antibody is generated from rabbits immunized with a KLH conjugated synthetic phosphopeptide corresponding to amino acid residues surrounding S596 of human LINGO-1 (LRRN6A).

Storage: Aliquot and store at -20 °C. Avoid repeated freeze/thaw cycles.

Swiss Prot: [Q9D1T0](#)

Abbexa Ltd, Innovation Centre, Cambridge Science Park, Cambridge, CB4 0EY, UK
Telephone: +44 (0) 1223 755950 - Fax: +44 (0) 1223 755951 - E-Mail: info@abbexa.com

Buffer: PBS with 0.09% (W/V) sodium azide. This antibody is purified through a protein A column, followed by two-step phosphospecific peptide affinity purification.

Note: This product is for research use only.