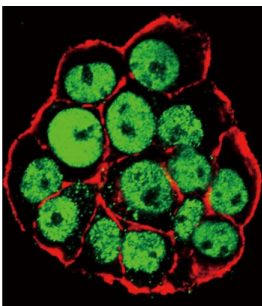
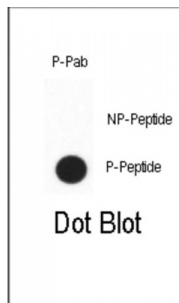


Abbexa Ltd, Innovation Centre, Cambridge Science Park, Cambridge, CB4 0EY, UK  
Telephone: +44 (0) 1223 755950 - Fax: +44 (0) 1223 755951 - E-Mail: info@abbexa.com

## CDX2 (pS283) Antibody

Catalogue No.: abx032079



The level and beta-cell specificity of insulin gene expression are regulated by a set of nuclear proteins that bind to specific sequences within the promoter of the insulin gene (INS; MIM 176730) and interact with RNA polymerase to activate or repress transcription. The proteins LMX1 (MIM 600298) and CDX3 are homeodomain proteins that bind an A/T-rich sequence in the insulin promoter and stimulate its transcription.

**Target:** CDX2 (pS283)

**Reactivity:** Human

**Host:** Rabbit

**Clonality:** Polyclonal

**Tested Applications:** IF/ICC, DB

**Recommended dilutions:** Optimal dilutions/concentrations should be determined by the end user.

**Immunogen:** Human CDX2 (phospho-Ser283).

**Purification:** Peptide Affinity Purified Rabbit Polyclonal Antibody.

**Isotype:** IgG

**Conjugation:** Unconjugated

Abbexa Ltd, Innovation Centre, Cambridge Science Park, Cambridge, CB4 0EY, UK  
Telephone: +44 (0) 1223 755950 - Fax: +44 (0) 1223 755951 - E-Mail: [info@abbexa.com](mailto:info@abbexa.com)

- Specificity:** This CDX2 Antibody is generated from rabbits immunized with a KLH conjugated synthetic phosphopeptide corresponding to amino acid residues surrounding S283 of human CDX2.
- Storage:** Aliquot and store at -20 °C. Avoid repeated freeze/thaw cycles.
- Swiss Prot:** [Q99626](#)
- Buffer:** PBS with 0.09% (W/V) sodium azide. This antibody is purified through a protein A column, followed by two-step phosphospecific peptide affinity purification.
- Note:** This product is for research use only.