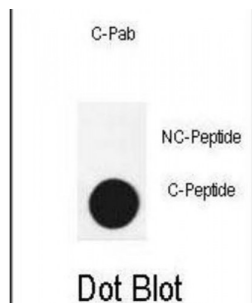


Abbexa Ltd, Innovation Centre, Cambridge Science Park, Cambridge, CB4 0EY, UK
Telephone: +44 (0) 1223 755950 - Fax: +44 (0) 1223 755951 - E-Mail: info@abbexa.com

Autophagy-Related Protein 3 (APG3 (cleaved)) Antibody

Catalogue No.: abx032095



APG3 (cleaved) Antibody is a Rabbit Polyclonal antibody against APG3 (cleaved).

Target: APG3 (cleaved)

Reactivity: Human

Host: Rabbit

Clonality: Polyclonal

Tested Applications: DB

Recommended dilutions: Optimal dilutions/concentrations should be determined by the end user.

Immunogen: Human APG3 (cleaved).

Purification: Peptide Affinity Purified Rabbit Polyclonal Antibody.

Isotype: IgG

Conjugation: Unconjugated

Specificity: This APG3-cleaved Antibody is generated from rabbits immunized with a KLH conjugated synthetic peptide 90-104aa selected from human APG3.

Storage: Aliquot and store at -20 °C. Avoid repeated freeze/thaw cycles.

Swiss Prot: [Q9NT62](#)

Buffer: PBS with 0.09% (W/V) sodium azide. This antibody is purified through a protein A column, followed by two-step phosphospecific peptide affinity purification.

Note: This product is for research use only.