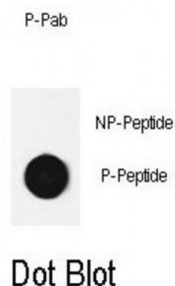


Abbexa Ltd, Innovation Centre, Cambridge Science Park, Cambridge, CB4 0EY, UK  
Telephone: +44 (0) 1223 755950 - Fax: +44 (0) 1223 755951 - E-Mail: [info@abbexa.com](mailto:info@abbexa.com)

## Cofilin (pS3) Antibody

Catalogue No.: abx032106



Cofilin is a widely distributed intracellular actin-modulating protein that binds and depolymerizes filamentous F-actin and inhibits the polymerization of monomeric G-actin in a pH-dependent manner. It is involved in the translocation of actin-cofilin complex from cytoplasm to nucleus.

**Target:** Cofilin (pS3)

**Reactivity:** Human

**Host:** Rabbit

**Clonality:** Polyclonal

**Tested Applications:** DB

**Recommended dilutions:** Optimal dilutions/concentrations should be determined by the end user.

**Immunogen:** Human Cofilin (phospho-Ser3).

**Purification:** Peptide Affinity Purified Rabbit Polyclonal Antibody.

**Isotype:** IgG

**Conjugation:** Unconjugated

**Specificity:** This Cofilin Antibody is generated from rabbits immunized with a KLH conjugated synthetic phosphopeptide corresponding to amino acid residues surrounding Ser3 of human Cofilin.

**Storage:** Aliquot and store at -20 °C. Avoid repeated freeze/thaw cycles.

**Swiss Prot:** [P23528](#)

**Buffer:** PBS with 0.09% (W/V) sodium azide. This antibody is purified through a protein A column, followed by two-step phosphospecific peptide affinity purification.

**Note:** This product is for research use only.