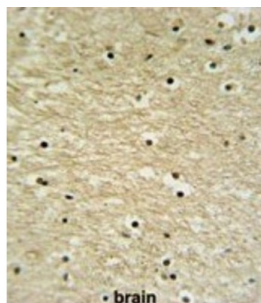


Abbexa Ltd, Innovation Centre, Cambridge Science Park, Cambridge, CB4 0EY, UK
Telephone: +44 (0) 1223 755950 - Fax: +44 (0) 1223 755951 - E-Mail: info@abbexa.com

AP-5 Complex Subunit Zeta-1 (K0415) Antibody

Catalogue No.: abx032451



The function of this protein has not been specifically defined.

Target: K0415

Reactivity: Human

Host: Rabbit

Clonality: Polyclonal

Tested Applications: IHC

Recommended dilutions: Optimal dilutions/concentrations should be determined by the end user.

Immunogen: Human K0415.

Purification: Peptide Affinity Purified Rabbit Polyclonal Antibody.

Isotype: IgG

Conjugation: Unconjugated

Specificity: This K0415 antibody is generated from rabbits immunized with a KLH conjugated synthetic peptide between 294-322 amino acids from the Central region of human K0415.

Storage: Aliquot and store at -20 °C. Avoid repeated freeze/thaw cycles.

Swiss Prot: [O43299](#)

Gene Symbol: K0415

Buffer: PBS with 0.09% (W/V) sodium azide. This antibody is purified through a protein A column, followed by peptide affinity purification.

Note: This product is for research use only.