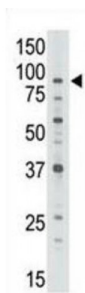
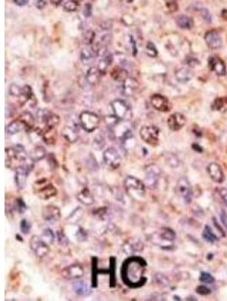


## ATP Binding Cassette Subfamily B Member 7 (ABCB7) Antibody

Catalogue No.: abx032688



The membrane-associated protein ABCB7 is a member of the superfamily of ATP-binding cassette (ABC) transporters. ABC proteins transport various molecules across extra and intra-cellular membranes. ABC genes are divided into seven distinct subfamilies (ABC1, MDR/TAP, MRP, ALD, OABP, GCN20, White). This protein is a member of the MDR/TAP subfamily. Members of the MDR/TAP subfamily are involved in multidrug resistance as well as antigen presentation. This gene encodes a half-transporter involved in the transport of heme from the mitochondria to the cytosol. With iron/sulfur cluster precursors as its substrates, this protein may play a role in metal homeostasis. Mutations in this gene have been implicated in X-linked sideroblastic anemia with ataxia.

**Target:** ABCB7

**Reactivity:** Human

**Host:** Rabbit

**Clonality:** Polyclonal

**Tested Applications:** WB, IHC

**Recommended dilutions:** Optimal dilutions/concentrations should be determined by the end user.

**Immunogen:** Human ABCB7.

**Purification:** Purified Rabbit Polyclonal Antibody.

Abbexa Ltd, Innovation Centre, Cambridge Science Park, Cambridge, CB4 0EY, UK  
Telephone: +44 (0) 1223 755950 - Fax: +44 (0) 1223 755951 - E-Mail: [info@abbexa.com](mailto:info@abbexa.com)

<b>Isotype:</b>	IgG
<b>Conjugation:</b>	Unconjugated
<b>Specificity:</b>	This ABCB7 antibody is generated from rabbits immunized with a KLH conjugated synthetic peptide between 718-746 amino acids from the C-terminal region of human ABCB7.
<b>Storage:</b>	Aliquot and store at -20 °C. Avoid repeated freeze/thaw cycles.
<b>Swiss Prot:</b>	<a href="#">O75027</a>
<b>Gene Symbol:</b>	ABCB7
<b>Buffer:</b>	PBS with 0.09% (W/V) sodium azide. This antibody is purified through a protein G column, eluted with high and low pH buffers and neutralized immediately, followed by dialysis against PBS.
<b>Note:</b>	This product is for research use only.