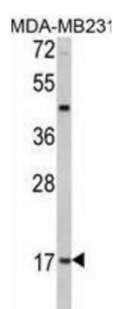
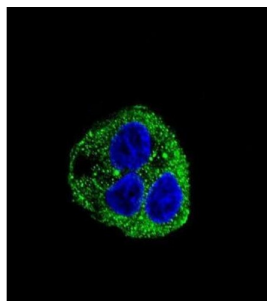


Abbexa Ltd, Innovation Centre, Cambridge Science Park, Cambridge, CB4 0EY, UK
Telephone: +44 (0) 1223 755950 - Fax: +44 (0) 1223 755951 - E-Mail: info@abbexa.com

Leptin (LEP) Antibody

Catalogue No.: abx032702



Leptin (LEP) is an adipocyte-secreted protein that regulates body fat and endocrine functions. Leptin is similar to the mouse obesity protein encoded by the obese gene (*ob*). In mouse studies, mutations in this gene are linked to severe and morbid obesity.

Target: Leptin

Reactivity: Human

Host: Rabbit

Clonality: Polyclonal

Tested Applications: WB, IF/ICC

Recommended dilutions: Optimal dilutions/concentrations should be determined by the end user.

Immunogen: Human Leptin.

Purification: Purified Rabbit Polyclonal Antibody.

Isotype: IgG

Conjugation: Unconjugated

Abbexa Ltd, Innovation Centre, Cambridge Science Park, Cambridge, CB4 0EY, UK
Telephone: +44 (0) 1223 755950 - Fax: +44 (0) 1223 755951 - E-Mail: info@abbexa.com

Specificity:	This Leptin (LEP) antibody is generated from rabbits immunized with a KLH conjugated synthetic peptide between 134-166 amino acids from the C-terminal region of human Leptin (LEP).
Storage:	Aliquot and store at -20 °C. Avoid repeated freeze/thaw cycles.
Swiss Prot:	<u>P41159</u>
Buffer:	PBS with 0.09% (W/V) sodium azide. This antibody is purified through a protein G column, eluted with high and low pH buffers and neutralized immediately, followed by dialysis against PBS.
Note:	This product is for research use only.