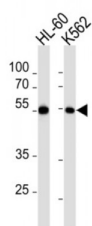
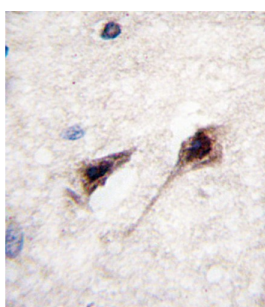
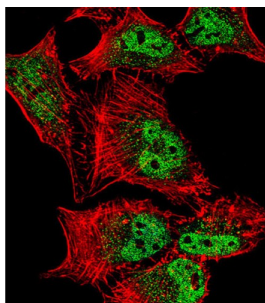


Abbexa Ltd, Innovation Centre, Cambridge Science Park, Cambridge, CB4 0EY, UK
Telephone: +44 (0) 1223 755950 - Fax: +44 (0) 1223 755951 - E-Mail: info@abbexa.com

Myocyte Enhancer Factor 2C (MEF2C) Antibody

Catalogue No.: abx032780



MEF2C is a transcription activator which binds specifically to the MEF2 element present in the regulatory regions of many muscle-specific genes. This protein controls cardiac morphogenesis and myogenesis, and is also involved in vascular development. It may also be involved in neurogenesis and in the development of cortical architecture.

Target: MEF2C

Reactivity: Human

Host: Rabbit

Clonality: Polyclonal

Tested Applications: WB, IHC, IF/ICC

Recommended dilutions: Optimal dilutions/concentrations should be determined by the end user.

Abbexa Ltd, Innovation Centre, Cambridge Science Park, Cambridge, CB4 0EY, UK
Telephone: +44 (0) 1223 755950 - Fax: +44 (0) 1223 755951 - E-Mail: info@abbexa.com

Immunogen:	Human MEF2C.
Purification:	Peptide Affinity Purified Rabbit Polyclonal Antibody.
Isotype:	IgG
Conjugation:	Unconjugated
Specificity:	This MEF2C antibody is generated from rabbits immunized with a KLH conjugated synthetic peptide between 365-394 amino acids from human MEF2C.
Storage:	Aliquot and store at -20 °C. Avoid repeated freeze/thaw cycles.
Swiss Prot:	<u>Q06413</u>
NCBI Accession:	NP_001124477.1, NP_001180276.1, NP_001180277.1, NP_001180278.1, NP_001180279.1, NP_002388.2
Buffer:	PBS with 0.09% (W/V) sodium azide. This antibody is purified through a protein A column, followed by peptide affinity purification.
Note:	This product is for research use only.