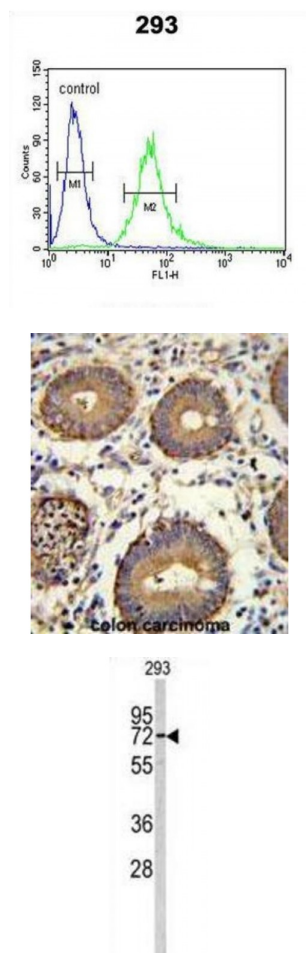


Abbexa Ltd, Innovation Centre, Cambridge Science Park, Cambridge, CB4 0EY, UK  
Telephone: +44 (0) 1223 755950 - Fax: +44 (0) 1223 755951 - E-Mail: [info@abbexa.com](mailto:info@abbexa.com)

## Carcinoembryonic Antigen (CEA) Antibody

Catalogue No.: abx032838



CEA is a cell surface glycoprotein that plays a role in cell adhesion and in intracellular signaling. It is a receptor for E.coli Dr adhesins.

<b>Target:</b>	CEA
<b>Reactivity:</b>	Human
<b>Host:</b>	Rabbit
<b>Clonality:</b>	Polyclonal
<b>Tested Applications:</b>	WB, IHC, FCM
<b>Recommended dilutions:</b>	Optimal dilutions/concentrations should be determined by the end user.
<b>Immunogen:</b>	Human CEA.

Abbexa Ltd, Innovation Centre, Cambridge Science Park, Cambridge, CB4 0EY, UK  
Telephone: +44 (0) 1223 755950 - Fax: +44 (0) 1223 755951 - E-Mail: [info@abbexa.com](mailto:info@abbexa.com)

<b>Purification:</b>	Purified Rabbit Polyclonal Antibody.
<b>Isotype:</b>	IgG
<b>Conjugation:</b>	Unconjugated
<b>Specificity:</b>	This CEA antibody is generated from rabbits immunized with a KLH conjugated synthetic peptide between 400-429 amino acids from the Central region of human CEA.
<b>Storage:</b>	Aliquot and store at -20 °C. Avoid repeated freeze/thaw cycles.
<b>Swiss Prot:</b>	<a href="#"><u>P06731</u></a>
<b>Buffer:</b>	PBS with 0.09% (W/V) sodium azide. This antibody is prepared by Saturated Ammonium Sulfate (SAS) precipitation followed by dialysis against PBS.
<b>Note:</b>	This product is for research use only.