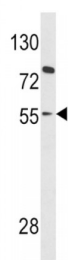
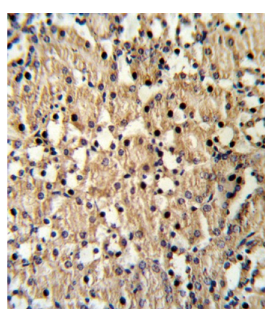
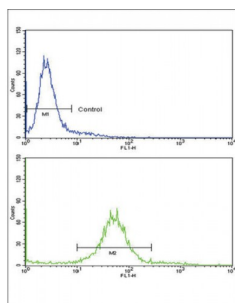


Abbexa Ltd, Innovation Centre, Cambridge Science Park, Cambridge, CB4 0EY, UK  
Telephone: +44 (0) 1223 755950 - Fax: +44 (0) 1223 755951 - E-Mail: [info@abbexa.com](mailto:info@abbexa.com)

## Paired Box Protein Pax-8 (PAX8) Antibody

Catalogue No.: abx033035



PAX8 is a member of the paired box (PAX) family of transcription factors. Members of this family contain a paired box domain, an octapeptide, and a paired-type homeodomain. This nuclear protein is involved in thyroid follicular cell development and expression of thyroid-specific genes.

<b>Target:</b>	PAX8
<b>Reactivity:</b>	Human
<b>Host:</b>	Rabbit
<b>Clonality:</b>	Polyclonal
<b>Tested Applications:</b>	WB, IHC, FCM

**Recommended dilutions:** Optimal dilutions/concentrations should be determined by the end user.

Abbexa Ltd, Innovation Centre, Cambridge Science Park, Cambridge, CB4 0EY, UK  
Telephone: +44 (0) 1223 755950 - Fax: +44 (0) 1223 755951 - E-Mail: [info@abbexa.com](mailto:info@abbexa.com)

<b>Immunogen:</b>	Human PAX8.
<b>Purification:</b>	Peptide Affinity Purified Rabbit Polyclonal Antibody.
<b>Isotype:</b>	IgG
<b>Conjugation:</b>	Unconjugated
<b>Specificity:</b>	This PAX8 antibody is generated from rabbits immunized with a KLH conjugated synthetic peptide between 285-313 amino acids from the Central region of human PAX8.
<b>Storage:</b>	Aliquot and store at -20 °C. Avoid repeated freeze/thaw cycles.
<b>Swiss Prot:</b>	<a href="#"><u>Q06710</u></a>
<b>NCBI Accession:</b>	NP_003457.1, NP_039246.1, NP_039247.1, NP_054698.1
<b>Buffer:</b>	PBS with 0.09% (W/V) sodium azide. This antibody is purified through a protein A column, followed by peptide affinity purification.
<b>Note:</b>	This product is for research use only.