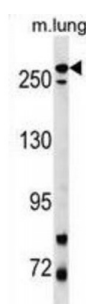
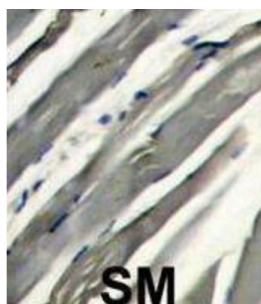


Abbexa Ltd, Innovation Centre, Cambridge Science Park, Cambridge, CB4 0EY, UK
Telephone: +44 (0) 1223 755950 - Fax: +44 (0) 1223 755951 - E-Mail: info@abbexa.com

Leucine-Rich Repeat Serine/threonine-Protein Kinase 2 (PARK8) Antibody

Catalogue No.: abx033175



Parkinson is the second most common neurodegenerative disease after Alzheimers. About 1 percent of people over the age of 65 and 3 percent of people over the age of 75 are affected by the disease. The mutation is the most common cause of Parkinson's disease identified to date. LRRK2, a genetic mutation, was recently found linked to about 5 percent of inherited cases of Parkinson's disease. By high-resolution recombination mapping and candidate gene sequencing in 46 families, 6 disease-segregating mutations (5 missense and 1 putative splice site mutation). It may be central to the pathogenesis of several major neurodegenerative disorders associated with parkinsonism. LRRK2 belongs to the ROCO protein family and includes a protein kinase domain of the MAPKKK class and several other major functional domains.

Target: PARK8

Reactivity: Human, Mouse

Host: Rabbit

Clonality: Polyclonal

Abbexa Ltd, Innovation Centre, Cambridge Science Park, Cambridge, CB4 0EY, UK
Telephone: +44 (0) 1223 755950 - Fax: +44 (0) 1223 755951 - E-Mail: info@abbexa.com

Tested Applications: WB, IHC

Recommended dilutions: Optimal dilutions/concentrations should be determined by the end user.

Immunogen: Human PARK8.

Purification: Purified Rabbit Polyclonal Antibody.

Isotype: IgG

Conjugation: Unconjugated

Specificity: This PARK8 (LRRK2) antibody is generated from rabbits immunized with a KLH conjugated synthetic peptide between 878-909 amino acids from human PARK8 (LRRK2).

Storage: Aliquot and store at -20 °C. Avoid repeated freeze/thaw cycles.

Swiss Prot: [Q5S007](#)

NCBI Accession: NP_940980.3

Buffer: PBS with 0.09% (W/V) sodium azide. This antibody is prepared by Saturated Ammonium Sulfate (SAS) precipitation followed by dialysis against PBS.

Note: This product is for research use only.