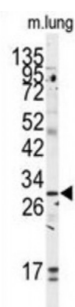
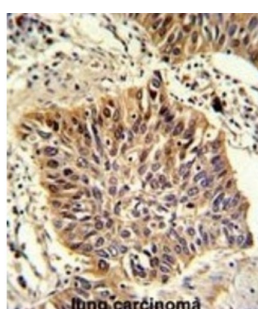
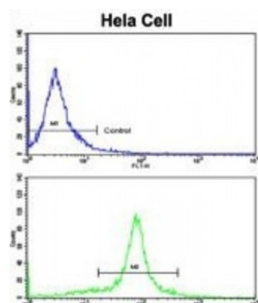


Abbexa Ltd, Innovation Centre, Cambridge Science Park, Cambridge, CB4 0EY, UK  
Telephone: +44 (0) 1223 755950 - Fax: +44 (0) 1223 755951 - E-Mail: [info@abbexa.com](mailto:info@abbexa.com)

## Golgi Phosphoprotein 3 (GOLPH3) Antibody

Catalogue No.: abx033398



The Golgi complex plays a key role in the sorting and modification of proteins exported from the endoplasmic reticulum. This protein encoded by this gene is a peripheral membrane protein of the Golgi stack and may have a regulatory role in Golgi trafficking.

<b>Target:</b>	GOLPH3
<b>Reactivity:</b>	Human, Mouse
<b>Host:</b>	Rabbit
<b>Clonality:</b>	Polyclonal
<b>Tested Applications:</b>	WB, IHC, FCM

**Recommended dilutions:** Optimal dilutions/concentrations should be determined by the end user.

Abbexa Ltd, Innovation Centre, Cambridge Science Park, Cambridge, CB4 0EY, UK  
Telephone: +44 (0) 1223 755950 - Fax: +44 (0) 1223 755951 - E-Mail: [info@abbexa.com](mailto:info@abbexa.com)

<b>Immunogen:</b>	Human GOLPH3.
<b>Purification:</b>	Purified Rabbit Polyclonal Antibody.
<b>Isotype:</b>	IgG
<b>Conjugation:</b>	Unconjugated
<b>Specificity:</b>	This GOLPH3 antibody is generated from rabbits immunized with a KLH conjugated synthetic peptide between 251-279 amino acids from the C-terminal region of human GOLPH3.
<b>Storage:</b>	Aliquot and store at -20 °C. Avoid repeated freeze/thaw cycles.
<b>Swiss Prot:</b>	<a href="#"><u>Q9H4A6</u></a>
<b>Buffer:</b>	PBS with 0.09% (W/V) sodium azide. This antibody is prepared by Saturated Ammonium Sulfate (SAS) precipitation followed by dialysis against PBS.
<b>Note:</b>	This product is for research use only.