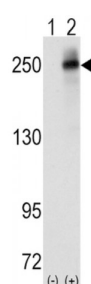
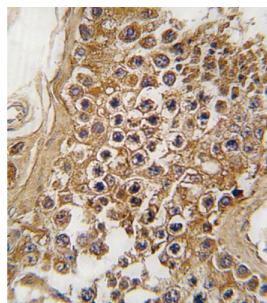


Abbexa Ltd, Innovation Centre, Cambridge Science Park, Cambridge, CB4 0EY, UK
Telephone: +44 (0) 1223 755950 - Fax: +44 (0) 1223 755951 - E-Mail: info@abbexa.com

Anaplastic Lymphoma Kinase (ALK) Antibody

Catalogue No.: abx033503



ALK, a member of the insulin receptor subfamily of Tyr protein kinases, is an orphan receptor. It appears to play an important role in the normal development and function of the nervous system. This Type I membrane protein is expressed in brain and CNS and in the small intestine and testis, but not in normal lymphoid cells. A form of non-Hodgkin's lymphoma is characterized by a chromosomal translocation t (2;5) (p23;q35) that involves NPM1 and ALK. The protein contains 1 LDL-receptor class A domain and 2 putative MAM domains.

Target:	ALK
Reactivity:	Human
Host:	Rabbit
Clonality:	Polyclonal
Tested Applications:	WB, IHC
Recommended dilutions:	Optimal dilutions/concentrations should be determined by the end user.
Immunogen:	Human ALK.
Purification:	Purified Rabbit Polyclonal Antibody.
Isotype:	IgG

Abbexa Ltd, Innovation Centre, Cambridge Science Park, Cambridge, CB4 0EY, UK
Telephone: +44 (0) 1223 755950 - Fax: +44 (0) 1223 755951 - E-Mail: info@abbexa.com

Conjugation: Unconjugated

Specificity: This ALK antibody is generated from rabbits immunized with a KLH conjugated synthetic peptide between 636-666 amino acids from the Central region of human ALK.

Storage: Aliquot and store at -20 °C. Avoid repeated freeze/thaw cycles.

Swiss Prot: [Q9UM73](#)

NCBI Accession: NP_004295.2

Buffer: PBS with 0.09% (W/V) sodium azide. This antibody is prepared by Saturated Ammonium Sulfate (SAS) precipitation followed by dialysis against PBS.

Note: This product is for research use only.