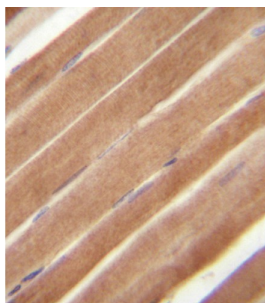


Abbexa Ltd, Innovation Centre, Cambridge Science Park, Cambridge, CB4 0EY, UK  
Telephone: +44 (0) 1223 755950 - Fax: +44 (0) 1223 755951 - E-Mail: [info@abbexa.com](mailto:info@abbexa.com)

## Ephrin Type-B Receptor 2 (EphB2) Antibody

Catalogue No.: abx033532



Ephrin receptors and their ligands, the ephrins, mediate numerous developmental processes, particularly in the nervous system. Based on their structures and sequence relationships, ephrins are divided into the ephrin-A (EFNA) class, which are anchored to the membrane by a glycosylphosphatidylinositol linkage, and the ephrin-B (EFNB) class, which are transmembrane proteins. The Eph family of receptors are divided into 2 groups based on the similarity of their extracellular domain sequences and their affinities for binding ephrin-A and ephrin-B ligands. Ephrin receptors make up the largest subgroup of the receptor tyrosine kinase (RTK) family. The ligand-activated form of EphB2, which belongs to the Tyr family of protein kinases, interacts with multiple proteins, including GTPase-activating protein (RASGAP) through its SH2 domain. It binds RASGAP through the juxtamembrane tyrosines residues, and also interacts with PRKCABP and GRIP1. This type I membrane protein is expressed in brain, heart, lung, kidney, placenta, pancreas, liver and skeletal muscle. It is preferentially expressed in fetal brain. This protein contains putatively 2 fibronectin type III domains and 1 sterile alpha motif (SAM) domain.

<b>Target:</b>	EphB2
<b>Reactivity:</b>	Human, Mouse
<b>Host:</b>	Rabbit
<b>Clonality:</b>	Polyclonal
<b>Tested Applications:</b>	IHC
<b>Recommended dilutions:</b>	Optimal dilutions/concentrations should be determined by the end user.
<b>Immunogen:</b>	Human EphB2.

Abbexa Ltd, Innovation Centre, Cambridge Science Park, Cambridge, CB4 0EY, UK  
Telephone: +44 (0) 1223 755950 - Fax: +44 (0) 1223 755951 - E-Mail: [info@abbexa.com](mailto:info@abbexa.com)

<b>Purification:</b>	Purified Rabbit Polyclonal Antibody.
<b>Isotype:</b>	IgG
<b>Conjugation:</b>	Unconjugated
<b>Specificity:</b>	This EphB2 antibody is generated from rabbits immunized with a KLH conjugated synthetic peptide between 103-133 amino acids from the N-terminal region of human EphB2.
<b>Storage:</b>	Aliquot and store at -20 °C. Avoid repeated freeze/thaw cycles.
<b>Swiss Prot:</b>	<a href="#">P29323</a>
<b>NCBI Accession:</b>	NP_004433.2, NP_059145.2
<b>Buffer:</b>	PBS with 0.09% (W/V) sodium azide. This antibody is purified through a protein G column, eluted with high and low pH buffers and neutralized immediately, followed by dialysis against PBS.
<b>Note:</b>	This product is for research use only.