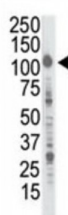
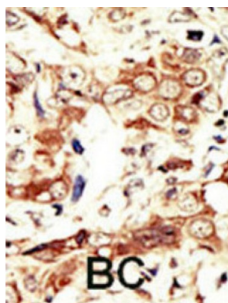


Abbexa Ltd, Innovation Centre, Cambridge Science Park, Cambridge, CB4 0EY, UK  
Telephone: +44 (0) 1223 755950 - Fax: +44 (0) 1223 755951 - E-Mail: [info@abbexa.com](mailto:info@abbexa.com)

## Insulin Receptor R Antibody

Catalogue No.: abx033581



Protein kinases are enzymes that transfer a phosphate group from a phosphate donor, generally the  $\gamma$  phosphate of ATP, onto an acceptor amino acid in a substrate protein. By this basic mechanism, protein kinases mediate most of the signal transduction in eukaryotic cells, regulating cellular metabolism, transcription, cell cycle progression, cytoskeletal rearrangement and cell movement, apoptosis, and differentiation. With more than 500 gene products, the protein kinase family is one of the largest families of proteins in eukaryotes. The family has been classified in 8 major groups based on sequence comparison of their tyrosine (PTK) or serine/threonine (STK) kinase catalytic domains. The tyrosine kinase (TK) group is mainly involved in the regulation of cell-cell interactions such as differentiation, adhesion, motility and death. There are currently about 90 TK genes sequenced, 58 are of receptor protein TK (e.g. EGFR, EPH, FGFR, PDGFR, TRK, and VEGFR families), and 32 of cytosolic TK (e.g. ABL, FAK, JAK, and SRC families).

**Target:** Insulin Receptor R

**Reactivity:** Human

**Host:** Rabbit

**Clonality:** Polyclonal

**Tested Applications:** WB, IHC

**Recommended dilutions:** Optimal dilutions/concentrations should be determined by the end user.

**Immunogen:** Human Insulin Receptor R.

Abbexa Ltd, Innovation Centre, Cambridge Science Park, Cambridge, CB4 0EY, UK  
Telephone: +44 (0) 1223 755950 - Fax: +44 (0) 1223 755951 - E-Mail: [info@abbexa.com](mailto:info@abbexa.com)

|                      |  |
|----------------------|--|
| <b>Purification:</b> | Purified Rabbit Polyclonal Antibody.   |
| <b>Isotype:</b>      | IgG  |
| <b>Conjugation:</b>  | Unconjugated   |
| <b>Specificity:</b>  | This Insulin Receptor R antibody is generated from rabbits immunized with a KLH conjugated synthetic peptide between 1256-1287 amino acids from the C-terminal region of human Insulin Receptor R. |
| <b>Storage:</b>      | Aliquot and store at -20 °C. Avoid repeated freeze/thaw cycles.  |
| <b>Swiss Prot:</b>   | <a href="#"><u>P14616</u></a>  |
| <b>Buffer:</b>       | PBS with 0.09% (W/V) sodium azide. This antibody is purified through a protein G column, eluted with high and low pH buffers and neutralized immediately, followed by dialysis against PBS.        |
| <b>Note:</b>         | This product is for research use only.   |